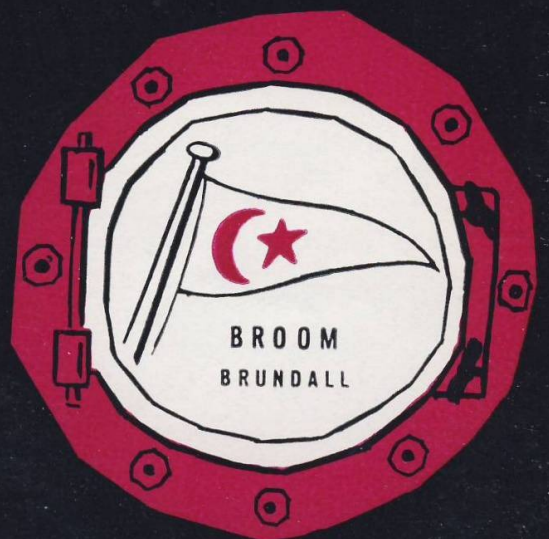




ON THE **BROADS**

WITH
A
BROOM
BOAT





INTRODUCTORY

"Our yard, the busy panoramic view of which you see above, is beautifully situated in the lovely upper reaches of the River Yare, and for those to whom crowded roads are best avoided, Brundall Railway Station is adjacent.

As founder members of Blakes Norfolk and Suffolk Broads Yacht Owners Association our fleet is the product of long experience in the field of Broadland holiday making. Our boats are strikingly designed, artfully laid out and embody the Association's standard of safeguards laid down by the code of Practice sponsored by the Ship and Boatbuilders National Federation.

Our Association membership also assures you of a wide range of service facilities available to member's craft all over the Broads."

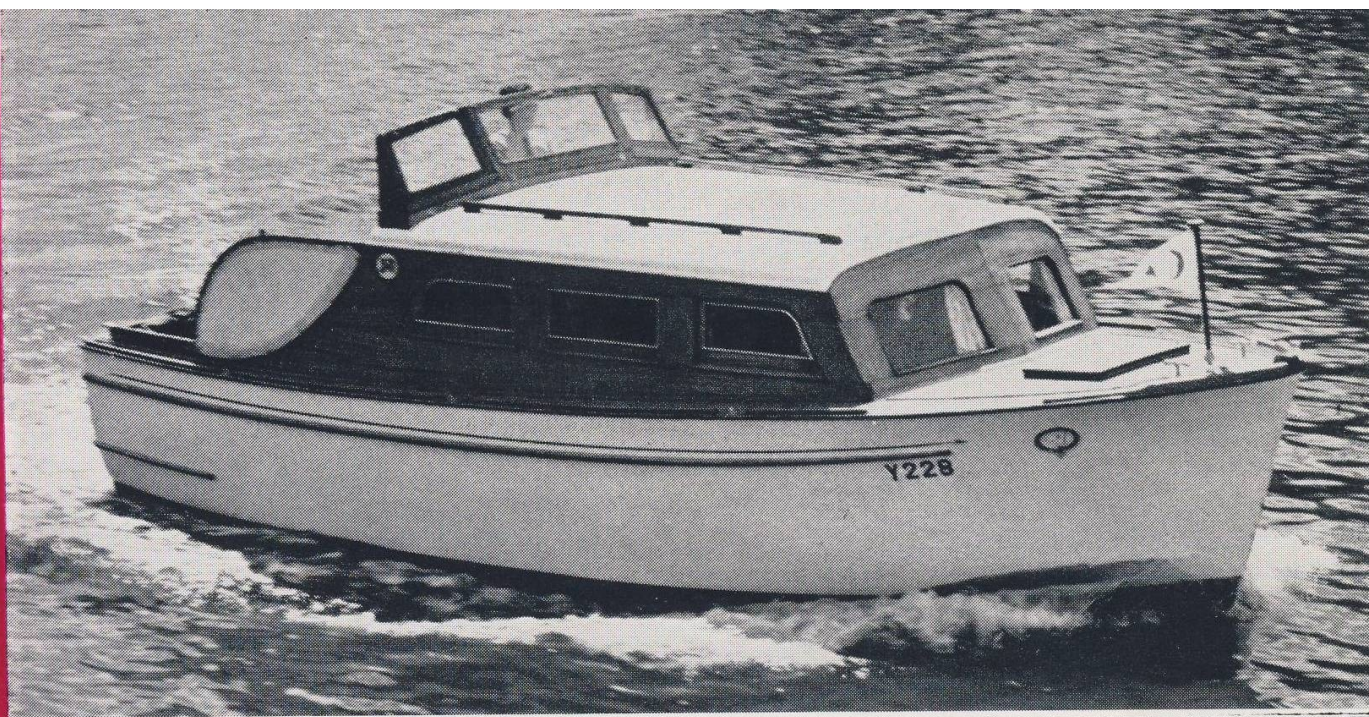
This brochure is intended to stir your interest in a Broads Holiday. If it has done so get in touch with us at:-

**C. J. Broom & Sons,
Boatbuilders & Marine Engineers,
Brundall, Norwich, Norfolk, NOR 86Z
Tel: BRUNDALL 2334 & 2253**

Established 50 years.

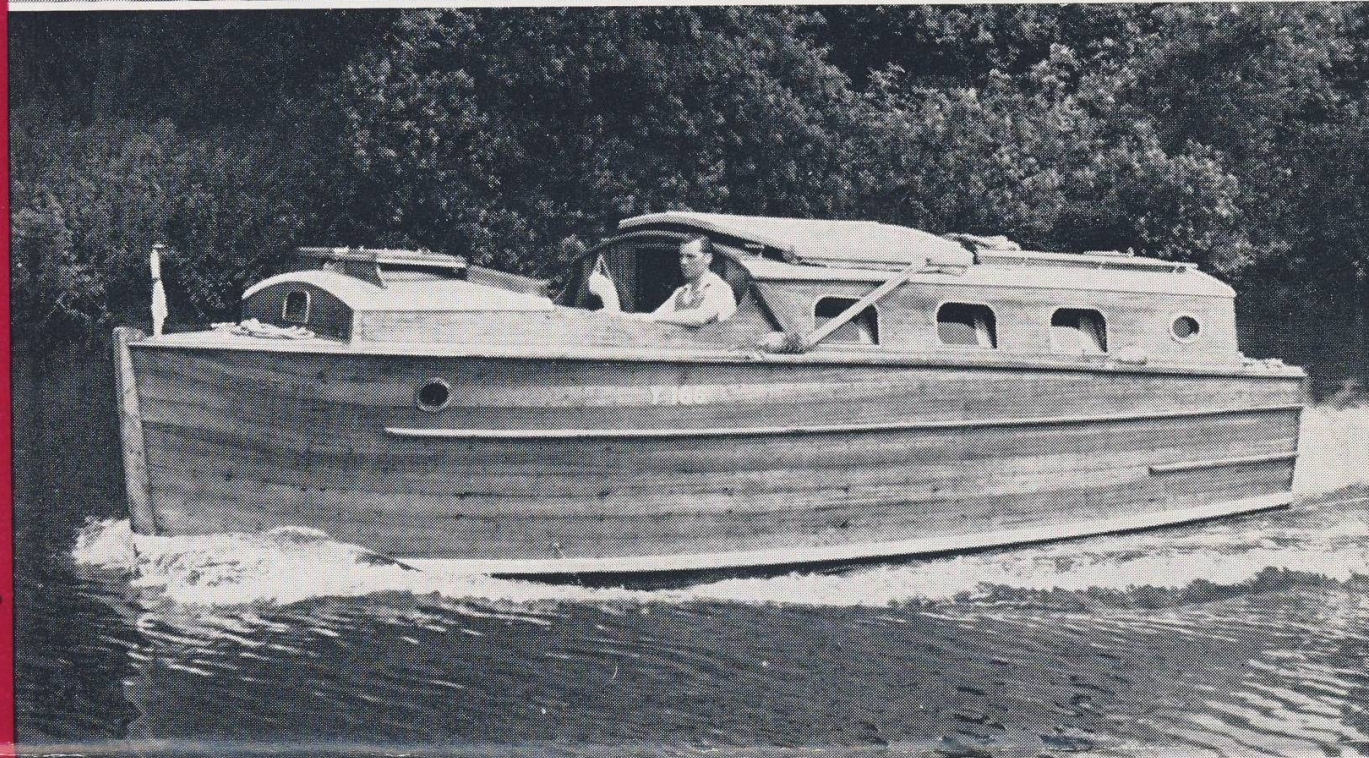
2

BERTH



4

BERTH



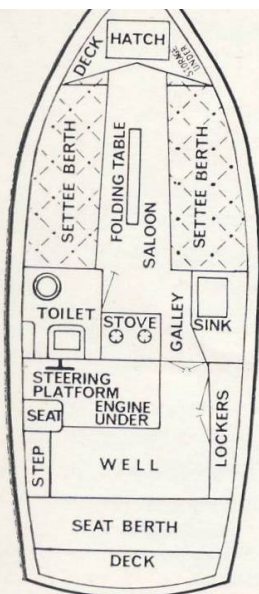
4

BERTH



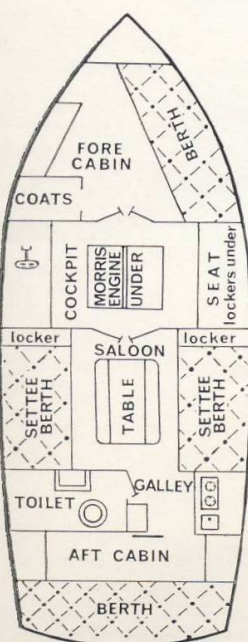
IMPORTANT NOTE

ON THE RECOMMENDATION OF THE LOCAL FIRE PREVENTION OFFICER WE HAVE DISCONTINUED THE USE OF GAS OPERATED REFRIGERATORS AND ARE NOW USING ICE-BOXES ON ALL CRAFT.



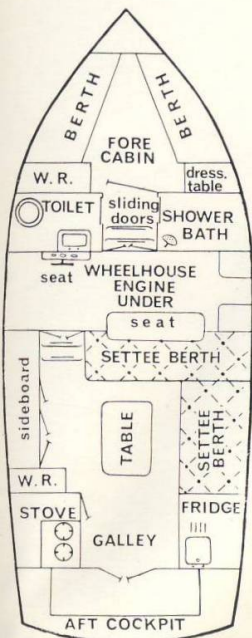
MATELOT

LENGTH: 25ft. **BEAM:** 8ft 6ins. **HEADROOM:** 6ft. **ENGINE:** 12 h.p. 4-cylinder Morris Navigator. **GALLEY:** Two-burner gas stove with oven. Stainless steel sink and drainboard. Water heater. Ice-box. **BERTHS:** Two dunlopillo with upholstered back-rests. A third person can be accommodated in the cockpit at the standard extra charge. **SPECIAL FEATURES:** Distinctive luxury cruiser with large aft cockpit. Upholstered helmsman's seat. Folding car type hood. Windscreen wiper, 230-volt electric razor point. Electric Bee taps supply hot water to sink and basin. Television and wireless available as extras.



CADET CLASS No's 7 & 8

LENGTH: 25 ft. **BEAM:** 8ft 3ins. **HEADROOM:** 6ft **ENGINE:** 4-cylinder B.M.C. Vedette. **GALLEY:** Formica lined. Two-burner gas cooker with oven. Sink, draining-board and lockers. Ice box. **BERTHS:** Four singles with Dunlopillo mattresses in two single and one double cabins. **SPECIAL FEATURES:** Designed with careful consideration for mixed parties and achieved by a three separate cabin arrangement. Fore and aft single cabins fitted with small dressing tables. Trakmark non-slip decks. Upholstered driving seat. 230-volt shaver point. Very light, easily operated canopy with fitted awnings and windscreen with wiper. Rowing dinghy provided. Wireless available as an extra.



NAVIGATOR CLASS No's 1, 2, 3 and 4

LENGTH: 35ft. **BEAM:** 10ft. 3ins. **HEADROOM:** 6ft. minimum **ENGINE:** No's 1 & 2 — B.M.C. diesel, No's 3 & 4 — Altair diesel, all reduction geared. Single lever control. Automatic gearbox. **GALLEY:** Large and plastic-lined, adjoining saloon, opening to aft cockpit. Large gas cooker, grill, oven. Ice-box. Stainless steel sink. **BERTHS:** Four single 5in. Dunlopillo. **SPECIAL FEATURES:** Modern craft of the well-known Broom distinctive design. Electric flushing W.C. Shower-bath. Electric water taps hot and cold. 230-volt razor point. Wheelhouse with glass sides, Vyanide roof. Windscreen wiper. Upholstered helmsman's seat. Wide, non-slip decks. Sailing dinghy, television and wireless as extras.

4

BERTH



6

BERTH



8

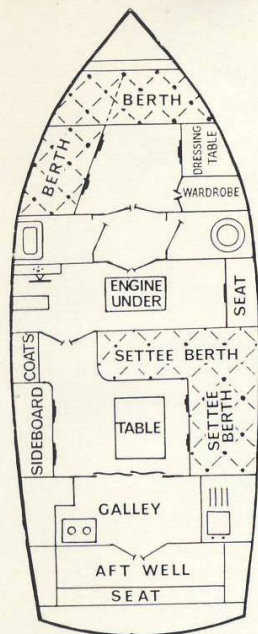
BERTH



CAPTAIN CLASS No's 5, 6, 7, 8, 9, 10, 11 and 12

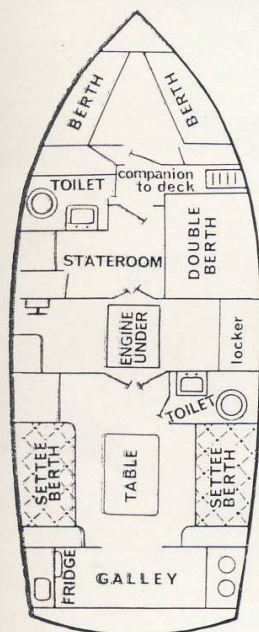
LENGTH: 34ft. 6ins. BEAM: 10ft. 3ins HEADROOM: 6ft. minimum. ENGINE: CAPTAIN 6, 7, 10 and 12 — B.M.C. diesel, No's 8 and 9 — Altair diesel, No's 5 and 11 — 20 h.p. 6-cylinder Morris petrol. BERTHS: Four single berths with Dunlopillo mattresses. GALLEY: Extra large compartment right aft adjoining saloon and opening out directly on to open cockpit. Household type multi-burner gas cooker with grill and oven. Stainless steel sink and draining board with generous locker space. Instant hot water from special heater. Ice-box. SPECIAL FEATURES: Superb craft of the well-known Broom distinctive design with accent on roominess and comfort. Sink and wash-basin supplied via Bee electric taps from 130-gallon tank. Wash-basin and W.C. in separate compartments. Generous wardrobe and hanging space. 230-volt electric razor point. Easily operated canopy with fitted awnings and windscreen wiper. Upholstered helmsman's seat. Sailing dinghy, television and wireless available as extras.

CAPTAIN 5 and 11 have white enamelled hulls, as illustrated: the others are bright varnished.



COMMANDER CLASS No's 1, 2, 3 & 4

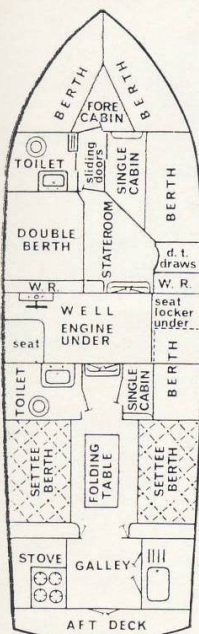
LENGTH: 37ft. BEAM: 10ft. 6ins. HEADROOM: 6ft. ENGINE: COMMANDER 1 and 2 — B.M.C. 4-cylinder diesel with reduction gear for improved performance. COMMANDER 3 and 4 — 20 h.p. 6-cylinder Morris petrol. GALLEY: Household type multi-burner gas cooker with grill and oven. Stainless steel sink drainboard unit with lockers. All conveniently placed with plenty of space and headroom. Constant hot water supplied by heater. Refrigerator. BERTHS: 4 single and one double with Dunlopillo mattresses. SPECIAL FEATURES: Superb craft of the well known Broom distinctive design with wide safe deck right round boat. Three entirely separate cabins and two separate toilet compartments supplied via Bee electric taps from 140-gallon tanks. 230-volt electric razor point. Plenty of wardrobe, dressing table and shelf space. Special lowering wheelhouse, providing all round glass protection, can be used with either top or sides up to suit weather conditions. Fitted with windscreen wiper and upholstered helmsman's seat. Sailing dinghy provided. Television and wireless available as extras.



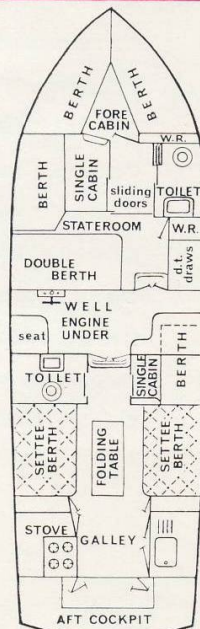
ADMIRAL CLASS No's 3, 4, 5, 6 and 7

LENGTH: 42 ft. BEAM: 10ft. 6ins. HEADROOM: 6ft 3ins. ENGINE: B.M.C. 4-cylinder diesel with reduction gear for best performance at lowest cost. GALLEY: Household type multi-burner gas cooker with grill and oven. Stainless steel sink and drain board unit with plenty of locker space. Galley conveniently placed aft, next to saloon. Instant hot water throughout. Refrigerator. BERTHS: Six single and one double. All dunlopillo. SPECIAL FEATURES: Distinctive design with large parties or families in mind. Five entirely separate cabins, two toilet compartments supplied via Bee electric taps from 140-gallon tanks. 230-volt electric razor point. Wide safe decks fitted with non-slip pyramid rubber. Electric bilge pump. Easily operated wheelhouse adaptable for all weather conditions. Windscreen wiper and upholstered helmsman's seat. Unique system of hot water supply to all basins and sink. Sailing dinghy provided. Television and wireless available as extras.

ADMIRAL 5, 6 and 7 have an extra cockpit aft (see plan) and ADMIRAL 3 and 4 have proportionately larger centre cockpits.



ADMIRALS 3 & 4



ADMIRALS 5, 6 & 7

4

BERTH



4

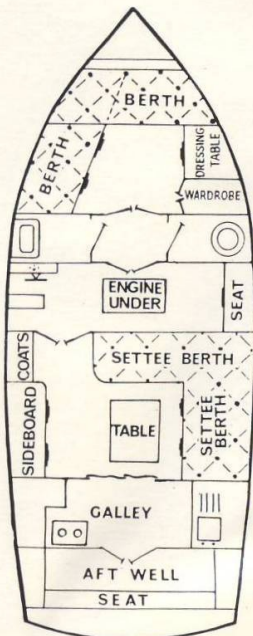
BERTH



6

BERTH

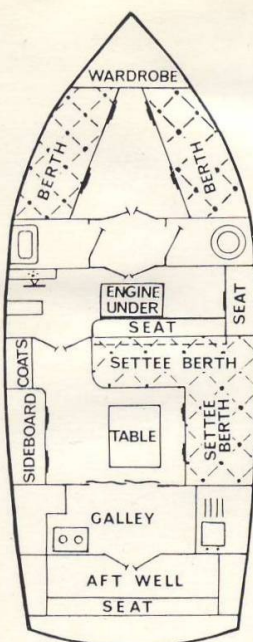




CAPTAIN COOK CLASS

CAPTAIN COOK, CAPTAIN VOSS, CAPTAIN BLIGH & CAPTAIN KIDD

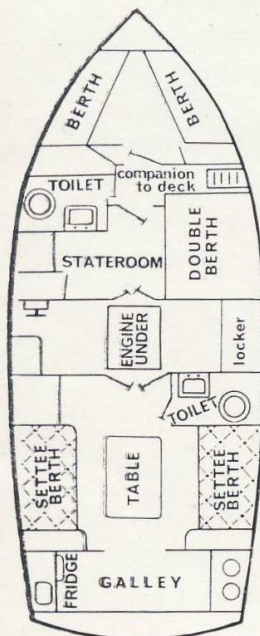
LENGTH: 34ft. 6ins. **BEAM:** 10ft. 3ins. **HEADROOM:** 6ft. minimum. **ENGINE:** 20 h.p. petrol unit. This provides unusually quiet running. **BERTHS:** Four single berths with dunlopillo mattresses. **GALLEY:** Extra large compartment right aft adjoining saloon and opening out directly on to open cockpit. Household type multi-burner gas cooker with grill and oven. Stainless steel sink and draining board with generous locker space. Instant hot water from special heater. Ice-box. **SPECIAL FEATURES:** Superb craft of the well-known Broom distinctive design with accent on roominess and comfort. Sink and wash-basin supplied via Bee electric taps from 130-gallon tank. Wash-basin and W.C. in separate compartments. Generous wardrobe and hanging space. 230-volt electric razor point. Wheelhouse has glass fold down sides and windscreen with easy roll back hood. Sides can be used in up position with hood down to give excellent protection from wind. Upholstered raised up passengers seat in wheelhouse. Upholstered helmsman's seat. Sailing dinghy, television and wireless available as extras.



LIEUTENANT

LENGTH: 35ft. **BEAM:** 10ft. 3ins. **HEADROOM:** 6ft. minimum. **ENGINE:** B.M.C. diesel with 2:1 reduction gear very economical. **BERTHS:** Four single berths with Dunlopillo mattresses. **GALLEY:** Extra large compartment right aft adjoining saloon and opening out directly on to open cockpit. Household type multi-burner gas cooker with grill and oven. Stainless steel sink and draining board with generous locker space. Instant hot water from special heater. Ice-box. **SPECIAL FEATURES:** A modern craft of distinctive appearance with beautifully appointed interior. Sink and wash-basin supplied via Bee electric taps from 130-gallon tank. Wash-basin and W.C. in separate compartments with hot and cold water. Generous wardrobe and hanging space. 230-volt electric razor point. Easily operated canopy with special side screens and windscreen wiper. Upholstered helmsman's seat. Dinghy, television and wireless available as extras.

This craft is in a class alone, providing that little extra in comfort and accomodation for the more discerning customer.



COMMANDER CLASS No's 1, 2, 3 & 4

LENGTH: 37ft. **BEAM:** 10ft. 6ins. **HEADROOM:** 6ft. **ENGINE:** COMMANDER 1 and 2 —B.M.C. 4-cylinder diesel with reduction gear for improved performance. COMMANDER 3 and 4—20 h.p. 6-cylinder Morris petrol. **GALLEY:** Household type multi-burner gas cooker with grill and oven. Stainless steel sink drainboard unit with lockers. All conveniently placed with plenty of space and headroom. Constant hot water supplied by heater. Refrigerator. **BERTHS:** 4 single and one double with Dunlopillo mattresses. **SPECIAL FEATURES:** Superb craft of the well known Broom distinctive design with wide safe deck right round boat. Three entirely separate cabins and two separate toilet compartments supplied via Bee electric taps from 140- gallon tanks. 230-volt electric razor point. Plenty of wardrobe, dressing table and shelf space. Special lowering wheelhouse, providing all round glass protection, can be used with either top or sides up to suit weather conditions. Fitted with windscreen wiper and upholstered helmsman's seat. Sailing dinghy provided. Television and wireless available as extras.

CONDITIONS OF HIRE AND GENERAL INFORMATION

A deposit, the value of which is indicated in the craft terms is to be sent to us at the time of booking. In the case of bookings from abroad, 50 per cent deposit is required. The deposit forms part payment of the hire charge.

The hirer is responsible for the balance of hire money and not for the deposit only. The balance is due and payable to the Owner of the craft at the place of embarkation on the date given for commencing the cruise and must be paid before starting. If the Hirer is prevented from taking possession he should notify us immediately and return his Hire Invoice. We will then endeavour to re-let the craft for him. Our charge for reletting is 10% of the full hire terms. If we are not successful the Hirer remains responsible for the whole of the balance due. Clients are advised to study The Hirers' Hardship Scheme outlined on the separate leaflet enclosed with this brochure.

Hirers of craft are responsible for such craft and fittings and all damage thereto, whether such damage is caused by negligence or otherwise. They are also responsible that the craft and utensils are left clean at the end of the cruise and given up punctually at the hour fixed.

The starting and finishing point for craft is Brundall, unless different arrangements are agreed upon by us.

All craft are let unattended. If a client requires the service of an attendant arrangements can be made provided an attendant is available at the time.

The correct time to join craft is after 4 p.m. on Saturdays. All craft must be given up by 10 a.m. on Saturdays.

"Double berth" where specified means a wide berth for two and not one above the other.

Plans are not to scale but simply show accommodation.

Motor craft unattended are let on the understanding that the Owner will give the client a trial run to see that the engine is in good order, after which the Hirer must take all the responsibility. All motor cruisers are fitted with means for reversing and are supplied with fire extinguishers.

FUEL. Petrol or Diesel left in tank at end of cruise credited in full.

CALOR GAS and LUBRICATING OIL are both included in terms.

LAUNDRY. All laundry except towels supplied inclusive in terms.

TERMS ARE FOR THE WHOLE BOAT up to the accommodation indicated in the specification. An increase in the number of passengers is not recommended as comfort is then very likely to be im-

paired. When definitely required by clients, an extra person can be accommodated on certain craft at an extra charge, but arrangements for this must be made with us in advance.

All cabin craft are completely equipped with stoves, crockery, cutlery, bedding, linen and everything necessary, except towels. Food, of course, is not included.

The letting is made on the understanding that the boat is to be placed at the disposal of the Hirer's on the date in question unless the Owners are prevented from so doing by circumstances not under the control of the Owners, in which case the deposit shall be returned to the Hirer in full, but the Hirer shall have no claim on any account against the Owners.

INSURANCE. Comprehensive insurance of the craft and Hirers' legal liability to the public (but not hirers' liability to any employee or passenger) is included in the terms. Full details available on request.

ELECTRIC LIGHTING and STARTING on all the motor cruisers is provided.

12-volt or 230-volt 2 point plug for shavers on every boat.

NAVIGATION. Under no circumstances may Broads craft be taken out to sea or below Southtown Bridge, Gt. Yarmouth, or through the lock at Oulton Broad.

LIFE JACKETS obtainable free on loan.

Craft are not supplied with navigation lights and Hirers are therefore not permitted to cruise after dark.

Towing craft, other than your dinghy, is not covered by your insurance unless an additional premium is paid.

PETS. Dogs, Cats and other pets are not permitted on craft, without special permission.

GARAGE accommodation is available at reasonable charges.

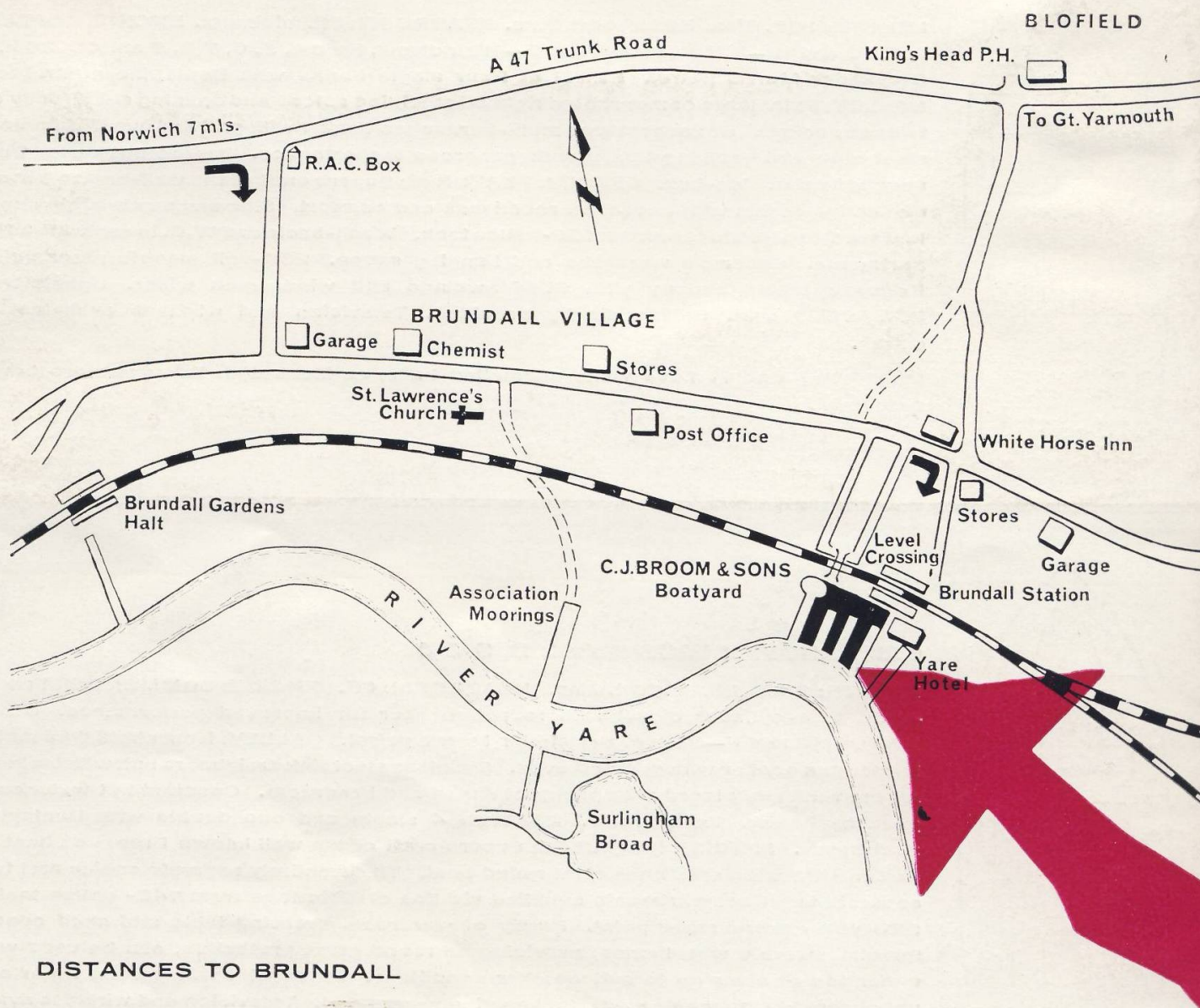
MINORS. Clients under 21 years must state that they are minors and send the written consent of parent or guardian when booking craft. The parent or guardian in giving written consent must confirm acceptance on Hirers' behalf of the booking conditions.

Only the person booking the craft need do this—not the whole party.

CORRESPONDENCE. Kindly print your name in capitals under your signature to save delay and mistakes. All letters referring to craft should be headed with name and boat and period required or booked.

CHANGE of ADDRESS. Clients notifying us will help if they mention their old address.

DO NOT FORGET TO TAKE ADVANTAGE OF THE HIRERS' HARDSHIP SCHEME



DISTANCES TO BRUNDALL

Aberystwyth 277

Berwick-upon-Tweed 327

Birmingham 163

Bournemouth 222

Brighton 168

Bristol 215

Cambridge 69

Cardiff 243

Carlisle 291

Coventry 145

Derby 146

Doncaster 152

Exeter 284

Gloucester 186

Guildford 149

Hereford 210

Huddersfield 179

Hull 150

Leeds 180

Leicester 125

Lincoln 113

Liverpool 223

London 118

Manchester 191

Newcastle 264

Northampton 119

Nottingham 131

Oxford 146

Penzance 396

Peterborough 84

Plymouth 326

Portsmouth 190

Preston 221

Reading 151

Sheffield 152

Southampton 196

Swansea 274

York 186