

Broom News²⁰⁰⁷

Published annually by the longest established builder of Power Boats in Great Britain - C.J.Broom & Sons Limited

New Broom 365 Well Received

Launched at the 2006 London Boat Show the 365 has attracted many favourable comments during the past year.

The knowledgeable team from Motor Boats Monthly carried out a thorough test and appraisal. The resulting report published in the September issue of the magazine made a number of encouraging comments. They stated: -

The advantage with the accommodation in an aft cabin boat is well recognised and concludes with the statement,

"Stay a few nights on a Broom boat and it all makes sense."

The team particularly liked the new easy to erect and fix canopy now standard on Broom boats. On the handling qualities they stated that the boat feels solid all over and has a comfortable natural trim with a quick response.

Broom were particularly pleased with the final comment that the 365 is,

"Quite simply one of the very best accelerating cruisers we have tested."

Copies of the full report are available from Broom.

A most comprehensive report was also produced in the Norfolk Afloat magazine and is also very



complimentary about the aft cabin concept in general and the aft cockpit of the 365 in particular and comments,

"As is typical with Broom and Andrew Wolstenholme thinking aesthetically the 365 is conservatively stylist with strong, clean lines and

no unnecessary embellishments."

The report concludes,

"The increase in speed and handling qualities can be fast and fun, spirited and even approaching sexy." (Broom are not quite sure about this at their age!)

Broom Launch New Model - The 425

Broom are pleased to announce the launch of a new model for 2007. The 425 is aimed at the serious cruising yachtsmen who requires the best accommodation for four people.

The 425 has the customary spacious and quality aft cabin as would be expected from Broom, together with an exceptionally large fore cabin. An innovation here is the berth arrangement. This has been designed to easily convert from being a double to two singles, which allows a choice for guests on board.

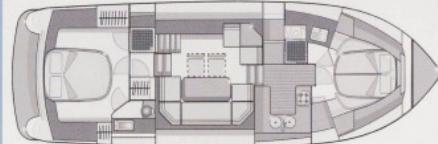
A major feature of the 425 is the provision of wide safe steps from the bathing platform to the deck each side, a feature which has proved so popular with the Broom 450 and 365.

A further progression in the design, style and build of the 425 is the introduction to the Broom range of frameless windows. These units still have an opening section in each cabin area, but are stronger, neater and more durable.

Power for the 425 is provided by twin inboard diesels ranging from 2 x 225 hp giving 18 knots up to 2 x 440 hp giving nearly 30 knots. A special single engine model is also going to be available with up to 370 hp giving 18 knots.



A most comprehensive specification is provided as standard with the 425 including a washing machine, electric toilets, electric anchor winch, teak decking to the bathing platform and steps to the deck.



About Broom

The Broom group provides a unique and most comprehensive service to boat owners. The facilities include boat building, new and second hand boat sales, refurbishment, maintenance, service, moorings, upholstery, cover making and stainless steel fabrication, plus a Volvo Service Dealership.

Some owners started boating by hiring a Broom boat, gone on to purchase a new or second hand Broom, used the service facilities provided at Brundall and eventually sold the boat via Broom's brokerage service. In some cases boats built by Broom are handed down from one generation to the next and are still serviced and maintained by Broom. This applies

particularly to wooden boats built in the earlier years.

Broom are based on the River Yare, the largest of the Broadland rivers. There is direct access to the sea with no locks or fixed bridges.

Continuous development of the Brundall site has ensured Broom can provide excellent service facilities for boats up to 55 feet in length. There are sheltered moorings, areas of hard standings, storage sheds, under cover docks as well as a purpose built service centre.

Aquafibre Mouldings Ltd., Broom's associate company, is located close by in the village of Rackheath. Here the hulls

and superstructures for the Broom range are moulded in a purpose built factory.

Aquafibre undertakes all the development work for each new Broom model, plus making this experience and expertise available to other boat manufacturers. In addition Aquafibre offer the largest range of hulls and superstructures for inland waterway charter boats which are used throughout Europe.



Message from Managing Director



2006 was a good year for Broom Boats, with a strong order book, good results from the major boat shows and continued customer loyalty. We also enjoyed very good feedback on the Broom 365.

The leisure boat building industry is very different from my background in sports car manufacturing and high performance automotive engineering. The initial impressions at Broom have been those of a fantastic product, huge customer loyalty and a tremendously skilled and committed workforce.

The great strength of the company is the workforce. The level of craftsmanship, the attention to detail, the commitment and the pride in the work are all outstanding. It is no wonder the company enjoys such a strong reputation.

The obvious strengths of the product are the aft cabin concept and the ability for the customer to have a large input in the specification of their boat. We are continually looking at ways to improve the specification of all of the boats in the range.

To compete in the current market we need to build on these strengths, whilst finding ways of working smarter. As such, manufacturing has been a major part of my focus in 2006. Our aim has to be to provide what the customer wants, to be able to deliver it in the shortest possible lead time and to ensure that it is defect free.

We have already started a number of initiatives in line with these objectives and will continue to move forward in 2007.

The strategy at Broom Boats is firmly based upon being able to increase the output from the existing staff through smarter working practises and not based upon reducing the workforce.

I look forward to providing an update at the end of 2007.

Sound Testing

The Recreational Craft Directive, which is a European requirement that all boats are built to certain standards, has recently been extended to include a requirement that engines in boats must meet strict exhaust emission and sound levels.

Whilst it is the responsibility of the engine manufacturer to meet the emission levels it is the boat builders job to prove the vessel does not exceed defined noise levels. To achieve this objective a complicated formulae has to be followed which requires the boat to pass a microphone on a fixed point, at a distance of 25 metres and at its maximum speed or 33 knots, if the boat is faster. This must be done in reasonably smooth water which is defined in the standard.

Finding a suitable location with a fixed point to carry out the tests is very difficult. To overcome this problem Broom have developed, in conjunction with a specialist company, a system where the microphone is located on another boat. The system incorporates a GPS that speaks to the helmsman of the boat being tested, giving a course to direct the vessel to be 25 metres from the microphone as it passes.

All Broom engine installations are now tested to meet the new standards and evidence has shown the boats are all considerably quieter than is required.



Covered Docks

A major feature of the Broom facilities are a number of heated undercover docks where boats can be worked on afloat in excellent conditions.



Broom Services

Maintenance Division

Broom continues to expand their maintenance facilities at the Brundall site, providing a comprehensive service to boat owners. Under the management of Colin Boast with a team of skilled boat builders, marine engineers, painters, valets and all types of service, maintenance, refurbishment and servicing are undertaken. The picture in the centre shows a 1970's Broom 37 undergoing a major refit with the windows being completely refurbished, all the fabrics being replaced and the engines rebuilt. The basic structure of the boat is in very good condition.



On Site Services

Stainless Steel Fabrication

The recently acquired business of G H Fabrications is now established at Brooms where all types of stainless steel items from complete masts, tanks and small individual fittings are all manufactured on site adjacent to the boats. Work is also carried out for other companies.



Window Repairs

For refurbishing and repairing all types of marine windows the services of a specialist company is available. They trade under the name of Burford Marine Windows.



Upholstery and Covers

To ensure the highest standards of upholstery are available the reputable company Custom Craft is based at Brooms. Their specialist area are boat covers of all kinds which can be purpose fitted undercover in Broom's wet docks.

For full details of all these services contact Broom's main office on 01603 712334.

Brundall Marine Services at Brundall Bay Marina

Broom now offer their services to a wider number of boat owners through their service division based at the largest marina on the Norfolk Broads. Known as Brundall Marine Services this facility has been enhanced with the award by Volvo of a Service Dealership. A large range of spares are available and the staff have undergone training by Volvo.

For details contact 01603 714372.



New Faces At Brooms

Broom continually plan to improve the quality and design of their boats and provide a better service for their loyal owners.

Technical Designer

During 2006 Broom were very pleased to welcome Lucinda Westley to create a new position of Technical Designer to support and modernise our design and build process.

Lucinda gained a Masters Degree in Transportation Design at Coventry University before gaining experience with other boat building companies.

Broom, whilst proud of their traditions, are ever mindful of the need to progress and modernise their boats and production process. Lucinda works closely with Andrew Wolstenholme, the Naval Architect responsible for all new Brooms. Whilst Andrew takes care of the design of the hull to ensure the excellent handling and seagoing qualities of the Broom range, Lucinda is concentrating on the styling and interior design.

Lucinda also prepares individual plans and drawings for both new and existing boats in for refit and modification.

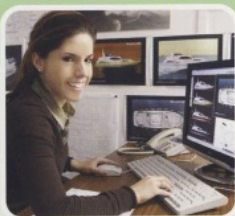
Customer Service Engineer

With boats becoming evermore complex it has become obvious that owners need ongoing advice and assistance with their new craft. To provide this service Broom have appointed Paul Bellison as their Customer Service Engineer.

Paul's main duties are to ensure a rapid and effective solution to any after sales problems, to record and report these so that they can be eliminated on future boats and to conduct a quality audit of boats prior to customer handover.

Whilst an experienced marine engineer, Paul can call on the trades and skills in Broom's production team to solve any problems.

Paul is well qualified to provide this service having gained experience in the motor industry tuning performance cars before joining the boat industry to deal with the maintenance and running of a fleet of hire boats and more recently as a marine engineer with Broom.



About aquafibre

The Charter Boat Specialists



Europa 42

Apart from supplying all the G.R.P. mouldings for the Broom range, Aquafibre, Broom's associate company, specialise in the development and production of charter boats specifically for the inland waterways of Europe.

The company's original market was the Norfolk Broads where literally hundreds of boats were produced for the expanding holiday industry. Most of the designs were developed to navigate the very low bridges at Wroxham and Potter Heigham and to be kept within a 12'6" beam restriction.

The 1980s saw the development of water borne tourism on the Rivers Shannon and Erne in Ireland. Here many of the charter companies built up fleets based on Aquafibre designs. In Ireland, the more open and less protected waterways required designs with higher sheer hulls and was not confined by the height and beam restrictions of the Broads. Some of the earlier designs utilised hulls from the Broom range.

Aquafibre are also a major supplier of Charter boats to the French Canals for which some very distinctive models have been developed with huge aft deck seating and sunbathing areas. The key restrictions on the French waterways being a maximum overall length of 48'6" and the height of the bridge at Capastang on the Canal du Midi.

The company's models are also found in Holland and on the Thames and Caledonian Canal and more recently the vast inland waterway system in Eastern Germany known as the Mecklenburg Lakes.

Aquafibre are currently fulfilling a major order from Cardinal Boating Holidays in Germany for a fleet of luxury charter craft. Aquafibre's 42ft Europa model was developed exclusively for this contract and is currently being fitted out in both 4 and 6 berth versions by Haines Marine and Goodchild Marine in Norfolk.

The Europa was designed by Andrew Wolstenholme and is probably the most exclusive charter boat for its size available in Europe, complete with teak decking and satellite T.V!

For further information on Aquafibre's wide range of quality mouldings and development expertise, please contact:

Aquafibre Mouldings Ltd, Wendover Road, Rackheath, Norwich, NR13 6LR,
Tel: +44 (0) 1603 720651 Fax: +44 (0) 1603 720654 Email: info@aquafibre.co.uk

Broom 42 Development



The 42 has proved to be one of Broom's most successful models, providing a natural progression from the many 37's, 38's and 39's built over the years.

To ensure the 42's continued popularity Broom have made an important modification to this model. The transom has been completely redesigned and restyled to incorporate transom steps up both sides of the vessel. First introduced on the 450 and subsequently on the new 365, this feature has proved very popular with owners. It means that whichever way the boat is moored to its berth, it can easily be accessed by the transom steps.

Broom 415 Circumnavigates UK

Broom's claim to design and build serious seagoing motor cruisers was enhanced by the 1600 mile cruise round the UK by Ian and Barbara Dunsire in their Broom 415 in 2006. Ian Dunsire is quoted as follows:

"A long-term ambition was to circumnavigate the UK and last summer provided an opportunity and a reasonable weather window to undertake the trip from our base at Island Harbour, Isle of Wight. After rounding Lands End we routed via the Isle of Man to Oban and then through the spectacular Caledonian Canal before the long haul home down the east coast. "Harley Spirit" behaved perfectly throughout the 1600 nautical mile trip, coping admirably with some rough seas and long cruising sections. The Yanmar 420's consumed over 3700 litres of diesel but did not even require a top-up of oil. Overall we averaged 18 knots (22 knots on the sea legs) and took 31 days to complete the trip. We look back on the experience with pleasure and pride - next stop the Baltic!"



Harley Spirit in the Crinan Canal

Broom Owners Club



News from the chairman.

Fast growing membership enjoys new regional structure

Two years on from its long-awaited formation, the Broom Owners Club now has over 210 boat memberships, representing over 400 co-owners. To make sure the club meets the needs of all its members, we have introduced a network of regional coordinators to maintain good communication and organise events. The East Coast and Thames regions continue to form the largest proportion of membership, although strong growth in our Irish membership is now challenging the South Coast for third place!

Our regional coordinators have ensured a whole year of active cruising, with river-based rendezvous taking place on the Broads, the Thames, the Shannon and the Stour. Members new to coastal cruising had opportunities to go to sea under the guidance of more experienced members, either on their own boat or as extra crew and cruises-in company departed from the Broads for two weeks in the Netherlands, whilst a South Coast fleet met with Channel Island members for a guided tour of this popular cruising ground.



Members cruising on the Southern Broads

together or asking questions of fellow members and the newly expanded technical pages, offering invaluable advice and special deals, especially to those nurturing older engines. Members have also enjoyed a further boost to their membership benefits, with the doubling of the discount offered by Navigators & General to 10% on the club insurance scheme, and with annual membership at still only £25 per boat, you can hardly afford not to join.

Popular events like the Norfolk Weekend have become annual fixtures on the calendar and a more varied programme for this year's gathering met with an enthusiastic response. One event not to be missed is our free London Boat Show reception for members on the late opening evening of Thursday 11th January 2007. New and existing members alike enjoy the opportunity to swap stirring tales of the sea or to mull over ideas for the coming year. The following day we hold our Cruising Seminar, when members share their cruising experiences and ideas are turned to plans.

If you are not already a member have a look at www.broomowners.com, think about it briefly and then join today: you can download a form online, pick one up from Broom's reception, or phone membership secretary, Andy Nurse, on 01895 630207.

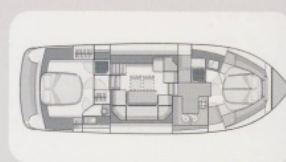
Broom Powerboat Range 2007

BROOM 35



Length - 34'10" (10.6m)
Waterline Length - 30'10" (9.3m)
Beam - 12'4" (3.8m) Draught - 3'2" (0.9m)
Single or Twin Engines HP Range 62 to 320 H.P.

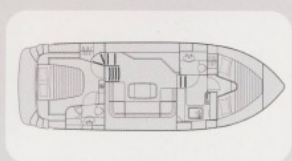
BROOM 425



Length - 42'6" (12.95m) Deck Length 39'9" (12.1m)
Waterline Length - 37'8" (11.49m)
Beam - 13'11" (4.24m) Draught - 3'6" (1.06m)
Single or Twin Engines HP Range 135 to 880 H.P.



BROOM 365



Length - 36'6" (11.13m) Deck Length - 33'8" (10.25m)
Waterline Length - 28'9" (8.75m)
Beam - 12'4" (3.78m) Draught - 3'4" (1.02m)
Twin Engines HP Range 450 to 620 H.P.

BROOM 450



Length - 45'0" (13.7m) Deck Length - 42'6" (13.0m)
Waterline Length - 36'0" (11.0m)
Beam - 15'3" (4.6m) Draught - 4'0" (1.2m)
Twin Engines HP Range 620 to 1000 H.P.



BROOM 39



Length - 39'6" (11.96m) Deck Length 36'10" (11.22m)
Waterline Length - 34'6" (10.5m)
Beam - 13'0" (3.96m) Draught - 3'6" (1.06m)
Single or Twin Engines HP Range 135 to 630 H.P.

BROOM 50



Length - 50'0" (15.24m) Deck Length - 46'6" (14.2m)
Waterline Length - 41'0" (12.5m)
Beam - 15'3" (4.6m) Draught - 4'3" (1.3m)
Twin Engines HP Range 740 to 1420 H.P.



BROOM 42



Length - 42'6" (12.95m) Deck Length 39'9" (12.1m)
Waterline Length - 37'8" (11.47m)
Beam - 13'11" (4.24m) Draught - 3'6" (1.07m)
Single or Twin Engines HP Range 135 to 880 H.P.

BROOM 50 HARDTOP



Length - 50'0" (15.24m) Deck Length - 46'6" (14.2m)
Waterline Length - 41'0" (12.5m)
Beam - 15'3" (4.6m) Draught - 4'3" (1.3m)
Twin Engines HP Range 740 to 1420 H.P.



How to contact us

For full details or the name of your nearest dealer contact
C.J.Broom & Sons, who will be pleased to discuss your requirements.

Broom, Brundall, Norwich, Norfolk NR13 5PX, England.

Telephone: +44 (0)1603 712334 Fax: +44 (0)1603 714803

E-mail: enquiries@broomboats.com

web site: www.broomboats.com

BROOM 530



Length - 53'0" (16.15m) Deck Length - 46'6" (14.2m)
Waterline Length - 41'0" (12.5m)
Beam - 15'3" (4.6m) Draught - 4'3" (1.3m)
Twin Engines HP Range 740 to 1420 H.P.



OVER ONE HUNDRED YEARS OF CRAFTSMANSHIP