

Broom News 1996



Published annually by the longest established builder of Power Boats in Great Britain - C.J. Broom & Sons Limited

THE LATEST FROM BROOM - THE 345

For 1996 Brooms announce the launch of a brand new addition to their Fast Offshore Range of aft cabin seagoing cruisers. Brooms used outside design consultants to work with designer Andrew Wolstenholme to develop and take forward the Broom concept. The result is a shapely modernistic boat yet essentially a very practical one on which to cruise and enjoy.

The Broom trademark of the aft deck sheltered command position is progressed to include

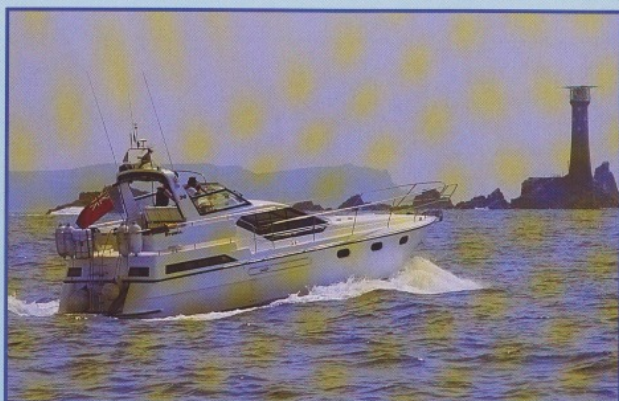
built-in safe and comfortable seating for use when both cruising fast offshore or relaxing in port. Complete with a neat fitting hood that allows access all round the deck and for easy mooring.

With a range of twin inboard diesels to choose from, speeds of up to 30 knots are anticipated for this exciting new Broom.



WHEN IT COMES TO SERIOUS CRUISING - BROOMS DO IT IN STYLE

Although more frequently seen cruising sedately along the rivers and coastal waterways of Europe, many Broom and Oceans undertake serious passage making each year.



Some 1995 achievements were:

Lady Genevieve Off Lands End

BARBARINA K - an Ocean 42 owned since new by Michael and Barbara Shefras was taken by them to Scandinavia and back covering 2,213 miles and visiting 55 ports in six countries. Cruising mainly at 15 knots,



Barbarina K

the Ocean 42 is very comfortable at that speed and, although a big boat, can be handled by two competent people.

MORS & LADY GENEVIEVE - A Broom 37 and 39, these two boats with their respective owners Maurice and Wendy Walmsley and Malcolm and Glenda Stennett made a complete circumnavigation of mainland Britain. Setting out northwards from Gt. Yarmouth they went right round the top of Scotland to return from the south to Yarmouth and Brooms Marina at Brundall



Gwenna IV

'GWENNA IV' - a Broom 44 was taken by her owner Ian Fairfield to Gibralt and back. Brooms had previously fitted an extra fuel tank to increase Gwenna IV's range to over 400 miles. Ian Fairfield had chosen a Broom 44 having previously owned an Ocean 42. The 44 was able to cruise at 18 knots and proved herself well able to cope with such a demanding sea journey. The longest leg was 310 miles, taking 19 hours.

JEAN CHELO - Perhaps the most remarkable voyage was the one undertaken by the owner of this Broom 30 who

took her from Brundall to Lyon and back. Similar cruises through the French canals and as far as the Mediterranean have been undertaken for each of the past 15 years. The owner always starts from Brooms boatyard base at Brundall and either returns by sea or occasionally, if he has gone further, sends Jean Chelo back by road transporter. She is then stored undercover, serviced and made ready for next year's voyage. The Broom 30 is now a thirty year old design, the owner is in his seventies and each cruise has been done entirely singlehanded: an inspiration to us all.



Jean Chelo

ABOUT *Broom*

Broom is the longest established power boat builders in Britain, established in 1898 and



still controlled by the Broom family. The Group now consists of Broom Boats Ltd., C.J.Broom & Sons Ltd., and Aquafibre Ltd. Broom Boats builds the Broom and Ocean range of power boats, operates one of the largest fleets of motor cruisers on the Norfolk Broads, manages the Brundall based Marina, and offers full boatyard services for a wide range of boats.

C.J.Broom & Sons is the Sales Company for the Broom and Ocean

range, plus it operates a brokerage section specialising in the sale of used Broom and Ocean cruisers, plus other quality motor yachts.

Aquafibre celebrates thirty years of continual success in the development and production of the widest range of motor cruiser GRP hulls and superstructures for inland waterways and seagoing use. These are available to the trade and also for home completion. Aquafibre also manufactures all the hulls and superstructures for the Broom and Ocean range.

Recently the well known journal *Motor Boats Monthly*, published an article describing the history of Brooms. Copies are available from our Brundall office.

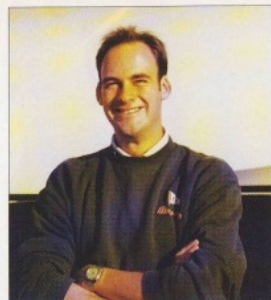


1960s Broom timber-built motor yacht

Brooms of Brundall - The Centre for used Oceans & Brooms

Under the guidance of Paul Pardon, Brooms of Brundall are well established as the main centre for buying and selling used Ocean and Broom quality motor cruisers.

Brooms always have the widest selection of craft ranging from



Iain Quinton

early Broom 30s up to little used Broom 39 Monarchs and 44's.

Brooms expert maintenance team play a vital part in this operation as they can prepare boats for sale to ensure the best condition prior to sale and carry out any repairs or refurbishment for either the seller or the buyer.

Following the busiest year ever for the Brokerage Division, Brooms have appointed an additional sales executive, Iain Quinton, to help in this most active area.

If you are considering buying or selling a Broom or Ocean, contact Paul or Iain, they will be pleased to advise and assist.



When it comes to manoeuvrability you cannot beat Brooms

Broom and Ocean boats dominated the Association of Thames Yacht Clubs Annual Rally again in 1995. The boat handling competition at this event is the most demanding and difficult of its kind in the UK and Broom boats took five out of the first six places! Our congratulations go to the helmsmen and crew of:

- The winner - CYMRU - Broom 35 European
- 2nd - BARBARINA K - Ocean 42
- 3rd - JOLLY ROTTER - Broom 37 Crown
- 4th - PETALOVIA - Broom 37 Crown
- 6th - GOLD COASTER - Broom 37 Crown

Harleyford - Home of Broom & Ocean on the Thames

Brooms are very pleased to announce the renewal of their old partnership with Harleyford Marine. From September 1995 Harleyford became Dealers for the Broom & Ocean range. With wonderful Marina facilities set in acres of the most attractive parkland, Harleyford are specialising in the Ocean range.

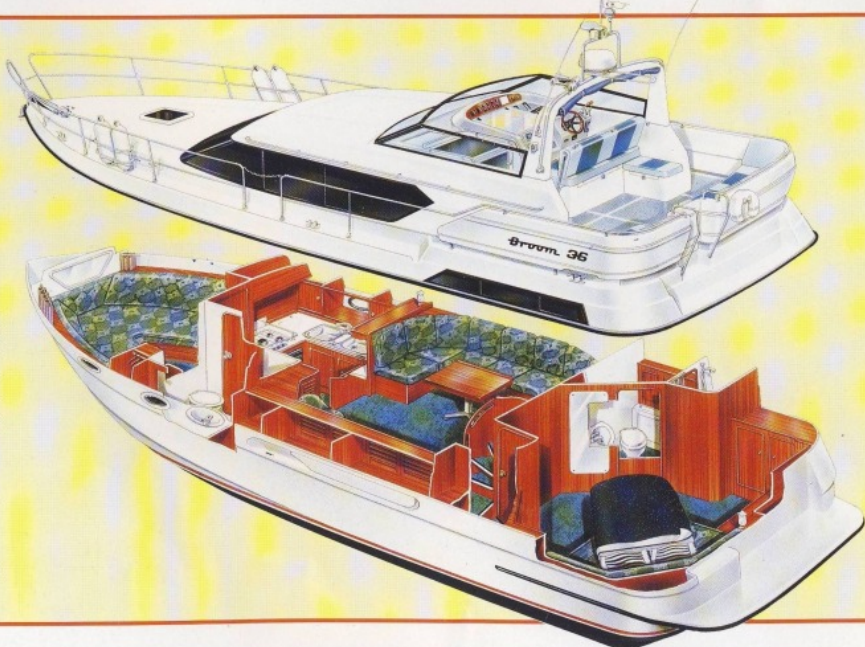
Examples of these craft, so suitable for the Thames and the coastal areas, can be inspected at Harleyford. They join Newark Marina near Nottingham and Paul Hadley Boat Sales at Northney Marina on the south coast as Broom and Ocean UK Dealers, each one strategically placed to give the best service and advice.

TAKING THE LID OFF THE 36

The Broom 36 is a popular model in the Broom Fast Offshore Range, combining all the traditional qualities of Broom with a modern design incorporating rounded screens, easy to walk along decks, a sophisticated sheltered aft deck command position and a neat folding hood, plus plenty of outside deck space.

The interior is rich with Brooms quality joinery blended with tasteful furnishings and fabrics.

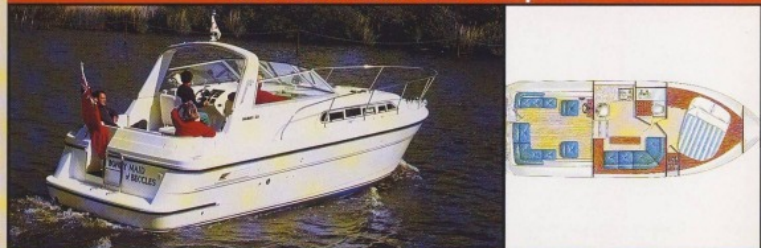
All this combined with a lively performance of up to 30 knots with top of the engine range.



Broom 1996 Powerboat Range

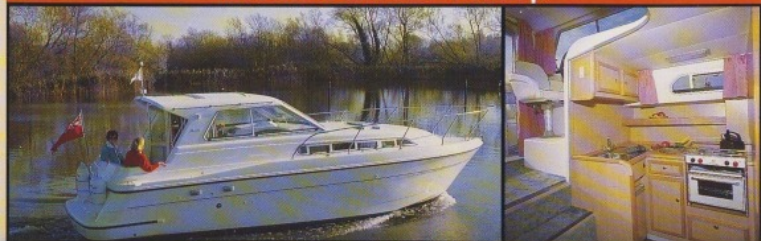
Estuary Range for Inland & Coastal Cruising

BROOM OCEAN 29 Softtop



Length - 29' (8.84m) Waterline Length - 25'6" (7.80m)
Beam - 10'5" (3.17m) Draught - 2'6" (0.76m)

BROOM OCEAN 29 Hardtop



Length - 29' (8.84m) Waterline Length - 25'6" (7.80m)
Beam - 10'5" (3.17m) Draught - 2'6" (0.76m)

BROOM OCEAN 31 Aft Deck



Length - 31' (9.45m) Deck Length - 29' (8.84m) Waterline Length - 27' (8.23m)
Beam - 11'6" (3.5m) Draught - 2'9" (0.8m)

BROOM OCEAN 31 Fly Bridge



Length - 31'0" (9.45m) Deck Length - 29'0" (8.84m) Waterline Length - 27'0" (8.23m)
Beam - 11'6" (3.5m) Draught - 2'9" (0.8m)

BROOM OCEAN 34



Length - 34'0" (10.4m) Deck Length - 32'6" (9.9m) Waterline Length - 30' (9.1m)
Beam - 12'4" (3.8m) Draught - 3'2" (0.9m)

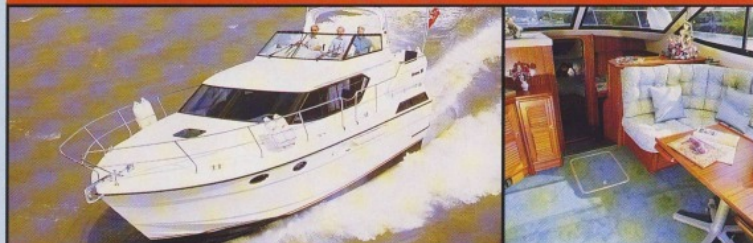
Fast Offshore Range

BROOM 345



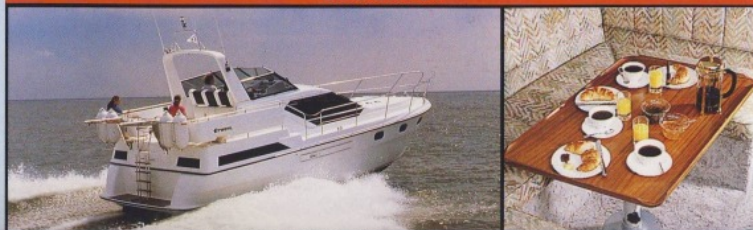
Length - 34'10" (10.6m) Deck Length - 32'6" (9.9m) Waterline Length - 26'9" (8.15m)
Beam - 12'4" (3.8m) Draught - 3'3" (1.04m)

BROOM 36



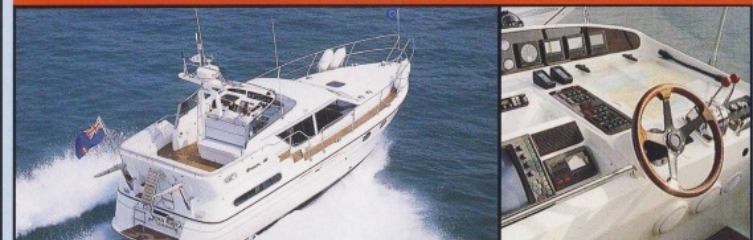
Length - 36'6" (11.12m) Deck Length - 34'5" (10.51m) Waterline Length - 28'9" (8.76m)
Beam - 12'3" (3.7m) Draught - 3'5" (1.04m)

BROOM 39



Length - 39'6" (12.00m) Deck Length - 37' (11.30m) Waterline Length - 30'9" (9.37m)
Beam - 13'6" (4.1m) Draught - 4'3" (1.29m)

BROOM 41



Length - 40'9" (12.42m) Deck Length - 38' (11.58m) Waterline Length - 32' (9.75m)
Beam - 13'6" (4.11m) Draught - 4'3" (1.29m)

BROOM 44 Hardtop



Length - 44'8" (13.6m) Deck Length - 42'4" (12.9m) Waterline Length - 36' (11.0m)
Beam - 15'3" (4.6m) Draught - 4' (1.2m)

BROOM 44 Mediterranean Sundeck



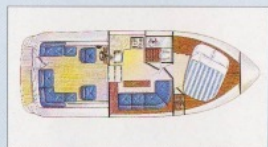
Length - 44'8" (13.6m) Deck Length - 42'4" (12.9m) Waterline Length - 36' (11.0m)
Beam - 15'3" (4.6m) Draught - 4' (1.2m)

BROOM 1996 HIRE FLEET UPDATE



Captain Bridgemaster

Brooms operate one of the largest and best hire fleets on the Norfolk Broads from their extensive boatyard base



on the lovely River Yare. With nearly 50 quality motor cruisers, the fleet is continuously updated and for 1996 the Captain Bridgemaster class is being increased.

The fleet also now has the Cadet class, the only Ocean 29 hardtops available for hire in the UK. These boats are



Cadet

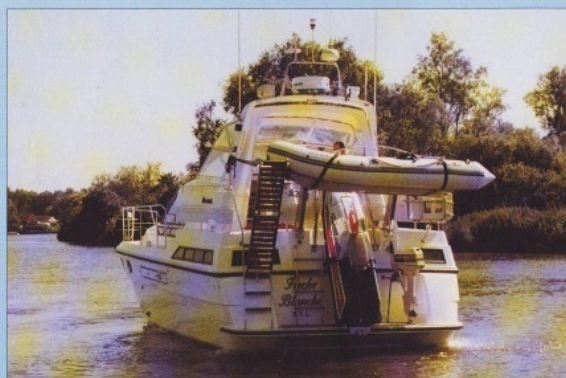
News From The Boatyard

A major part of Brooms operation is the provision of expert maintenance and service facilities for motor cruisers up to 50 feet in length. Extensive workshops are available together with heated wet docks where craft can be worked on whilst still afloat.

Apart from the normal boatyard service, Brooms undertake extensive refurbishment and repairs to a variety of craft. A particular challenge in 1995 was the request to

modify the transom of a Broom 39 to accommodate a transom boarding ladder, a large gangway, an inflatable dinghy, an outboard, a liferaft and a jet ski which had to be self-launching and recoverable by electric winch. The picture shows how this was achieved.

For full details of Brooms marina and boatyard services please contact Andrew Stone, Customer Services Manager or Colin Boast, Boatyard Manager on 01603 712334.



Broom 39

kept exclusively for Brooms fleet in order to satisfy those discerning customers who require a top of the range two berth, and those who may be reconsidering a purchase to try before they buy.

As well as the addition of these new boats, the whole fleet is steadily improved and for 1996 more boats are being brought up to the highest 'Blue chip' quality standard. These include the Sealord and Seachief models.

Brooms are founder members of the Blakes organisation, but also operate their own booking service and offer their own brochure. Winter office hours are 9.00am to 5.30pm weekdays and 9.00am to 12.30pm Saturdays. The works and office close down three days before Christmas until after New Year to give the staff a well earned break, but bookings can still be made outside these hours by calling Blakes Holidays Ltd on 01603 782911.

Torvill & Dean Visit Brooms

During 1995 Brooms were delighted to welcome aboard Commodore Bridgemaster the famous Jane Torvill and Christopher Dean. They both thoroughly enjoyed their visit to the Broads, so much so that they returned later for a trip afloat with the full touring company. It was a great pleasure for Mrs. Jennifer Broom and her staff to welcome such a charming and enthusiastic group of talented people.



Torvill & Dean on board Commodore 2

QUALITY AWARD FOR AQUAFIBRE



BS EN ISO 9000 (formerly BS 5750)
REGISTERED FIRM

During 1995, Brooms associate company Aquafibre were proud to be awarded the prestigious ISO 9002 (formerly BS 5750) Certification for Quality Assurance as development specialists and fibreglass boat moulders.

For over 30 years, Aquafibre have developed the mould-tools and have manufactured all the G.R.P. mouldings for Brooms luxury range of offshore and inland cruisers and their successful Broads Charter Fleet. By combining Aquafibre's development and moulding expertise with Brooms many years experience in designing, fitting out and operating charter boats, the group has become major suppliers of inland charter boats throughout Europe.

Aquafibre now offer a range of over 30 different models from 20ft to 45ft in length with models specifically suited for the various local conditions and requirements.

For example, the company offer a range of low-wash, low-airdraft cruisers suitable for the particular restrictions on the Norfolk Broads but also wide beam dual steering craft for the more open waterways of the Shannon and Erne in Ireland and the French Canals.

Brooms have specialised in fitting out some of these models for the top charter fleets in Europe namely; Emerald Star Line-the largest charter fleet in Ireland, and Crown Blue Line who hold a similar position in France and Holland.

Whilst Brooms are inevitably Aquafibre's largest customer, the company also sells hulls and superstructures to the independent trade and for home completion. Aquafibre also undertake development of

mould tools for other boat manufacturers.

For further information on Aquafibre's wide range of quality mouldings please contact:

Mr Ben Mackintosh,
Aquafibre Limited,
Wendover Road,
Rackheath, Norwich,
Norfolk, NR13 6LR.
Tel: (01603) 720651
Fax: (01603) 720654

RIVERSIDE HOLIDAY HOMES



Brooms also offer for hire attractive riverside chalets adjacent to their Marina on the River Yare. Each one has its own enclosed garden with river front moorings and views across the river to a nature reserve. Please call Brooms hire fleet booking service for full details



Commodore Bridgemaster

Broom

C J Broom and Sons Limited
Brundall, Norwich, Norfolk
NR13 5PX, England
Telephone: 01603 712334.
Fax: 01603 714803.

